

EDUCATION
EDUCATION
Education



Fáilte go dtí
Gaelscoil Uí Earcáin

2020/2021

Am Scoile

08:45 – 9:15: Geata na scoile oscailte agus na páistí ag dul isteach (doras an halla) agus ag siúl díreach chuig an rang.

09:15 : Tús leis an dteagasc.

13:20/13:30 : Téann na naíonáin abhaile.

14:10/14:20/14:30 : Téann rang a 1 go dtí rang a 6 abhaile i trí grúpaí éagsúla bunaithe ar a sloinne.

Siúlfaidh R1-6 amach chuig an geata. Le bhur dtoill, ná seas in aici le tuistí eile agus tú ag fanacht.



08:45 – 9:15: School gates opened. Children go in (hall door) and straight to their classroom.

09:15 : Teaching starts.

13:20/13:30 : Junior and Senior infants go home.

14:10/14:20/14:30 : 1st - 6th class go home in different groups based on their surname.

1st – 6th class will walk out to the gate. Please adhere to social distancing guidelines while waiting.

Tinreamh

09:15 : Tús leis an dteagasc.

09:50: Glaofar an Rolla i ngach rang.

13:20/13:30 : Téann na naíonáin abhaile.

14:10/14:20/14:30 : Téann Rang 1 - Rang 6 abhaile.

- Síniú isteach/amach lasmuigh den príomhdhoras ó 9:15 ar aghaidh. Níl cead ag aon tuismitheoir teacht isteach sa scoil – caithfear labhairt le Mary tríd an intercom
- Má tá do pháiste as láthair/ag teacht ar scoil déanach, cuir an t-eolas ar an APP tar éis an rolla a bheith déanta ag an scoil. Ná seol aon nóta ar scoil le bhur dtoill.

09:15 : Teaching begins in classrooms .

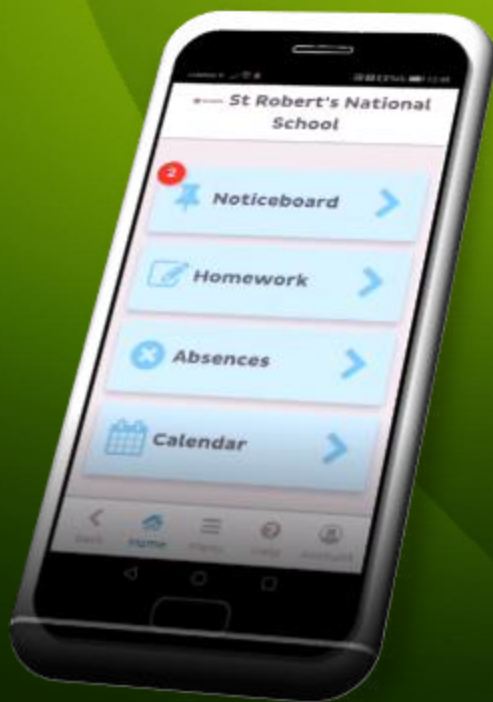
09:50: Attendance taken in all classes.

13:20/13:30 : Infant classes go home.

14:10/14:20/14:30 : 1st-6th class go home.

- Children must be signed in/out outside the main door from 9:15 onwards. Parents are not permitted to enter the school – you must speak with Mary through the intercom
- If your child is absent please fill in the reason on the App after the roll has been called by the school. Please don't send any notes into the school.

App Aladdin



What's Included

Connect



- Parent Portal
- Aladdin Connect App
- Parent Teacher Meeting Scheduler for 2018/19
- School Calendar
- Web Pre-enrolment
- Absence Reasons



Eolas Cruinn ar Aladdin – Accurate Information on Aladdin

- An féidir libh cinntiú go bhfuil bhur sonraí teagmhála suas chun dáta ar Aladdin? – mar shampla: uimhir guthán, seoladh, seoladh ríomhphost srl. Tá sé seo níos tábhachtaí i mbliana thar aon bliain eile
- An féidir aon fadhbanna sláinte atá ag do pháiste a coimead suas chun dáta ar Aladdin, ionas gur féidir linn aire a thabhairt dóibh ar scoil más gá.
- Coimead súil ar Aladdin le haghaidh aon teachtaireachtaí ón scoil.
- Can you please make sure that your contact details are up to date on Aladdin? – for example: phone number, address, email address This is more important this year than any other.
- Please ensure that any health issues that your child may have are kept up to date on Aladdin, so that we can take care of them if needs be.
- Keep an eye on Aladdin for any messages from the school.

Rolla na scoile

Sonraí le líonadh nuair atá páiste as láthair:

- Tinneas
- Cúis práinneach
- Díbirt
- Fionraí
- Eile (saoire srl)
- Aistrítear go scoil eile



Monatóir Tinreamh/ Múinteoir Caidreamh
Baile/ Dualgais ar an scoil tuairisc a
sheoladh chuig an S.L.O. /TUSLA ag 20 lá
scoile cailte.

Bí cúramach faoi laethanta saoire i rith an
téarma.

Details recorded when a child is absent:

- Illness
- Urgent family reason
- Expelled
- Suspended
- Other (Holidays etc)
- Transferred to another school

Attendance Monitor / H.S.C.L/ School is legally
required to forward a report to the
E.W.O/TUSLA when a child misses 20 days
of school

Be mindful of absenteeism when booking holidays
during term time.



As láthair go rialta

- Fógra ón scoil -10 lá cailte/ 15 lá cailte & ag 20 lá go bhfuil tuairisc a scríobh agus a sheoladh chuig an S.L.O./TUSLA.
- Glaoch/ téacs ón Monatóir Tinrimh/ Múinteoir Teagmháil Baile Scoile Pobail
- Cruinniú leis an Múinteoir TBSP/ Príomhoide na scoile.
- A notice from the school – 10 days missed/ 15 days missed and notification at 20 days missed that a report is being forwarded to the E.W.O/TUSLA.
- Phone call/ text from the attendance monitor/ H.S.C.L
- A meeting with the H.S.C.L/ School Principal.



Caomhnú Páistí

- DLP: Múinteoir Leah, Príomhoide na scoile (Principal)
- Leas-DLP: Múinteoir Richard, Príomhoide Tánaisteach na Scoile (Deputy Principal)
- Polasaí Caomhnú páistí ar fáil ar suíomh na scoile www.gsue.ie
- Grinnfhiosrúcháin: Caithfidh tuismitheoirí dul tríd an gcóras má siad tú ag iarraidh páirt a ghlacadh in imeachtaí ranga/ freastail ar an linn snámh i rith an scoil bhli. (An tAcht Grinnfhiosrúcháin 2016)
- Tá na foirmeacha ar fáil ón oifig:
- Nuair atá se líonta, tabhair ar ais chuig an oifig é le doiciméad aitheantais (pás, ceadúnas tiomáint srl). Tar éis cúpla seachtain gheobhaidh tú ríomhphost chun sonraí breise a líonadh agus nuair atá an grinnfhiosrúcháin i gcrích gheobhaidh tú nasc le roinnt leis an scoil. Is féidir leat e a sheoladh chuig eolas@gsue.ie .
- Ní fhaigheann an scoil aon sonraí ach amháin an nasc a sheolann tú ar aghaidh chugainn.



Gearán a Dhéanamh / Complaints procedure

Céim 1

- **1.1** Ba cheart dó/di teagmháil a dhéanamh leis an **múinteoir ranga** ar dtús leis an ngearán a réiteach. Caithfear é seo a dhéanamh trí glaoch gutháin i mbliana.
- **1.2** Sa chás nach féidir leis an tuismitheoir/caomhnóir teacht ar réiteach leis an múinteoir ranga, ba cheart an gearán a dhéanamh leis an **bpríomhoide**.
- **1.3** Mura mbíonn réiteach ar an ngearán ina dhiaidh sin, ba cheart don tuismitheoir/caomhnóir an gearán a ardú le **Cathaoirleach Bhord Bainistíochta** na scoile.
- **Céim 2 – 5** le fáil ar www.gsue.ie www.education.ie/en/Parents/

Stage 1

- **1.1** A parent/guardian who wishes to make a complaint should approach the **class teacher** with a view to resolving the complaint. This must be done via telephone this year.
- **1.2** Where the parent/guardian is unable to resolve the complaint with the class teacher she/he should approach the **Principal** with a view to resolving it.
- **1.3** If the complaint is still unresolved the parent/guardian should raise the matter with the **Chairperson of the Board of Management** with a view to resolving it.
- **Stages 2—5** of procedure are available on www.gsue.ie & www.education.ie/en/Parents/

Síntiús Scoile: Resources Subscription

Leabhair ar chíos / Book Rental scheme:	€30
Fearais ealaíne / Art supplies:	€20
Cóipleabhair agus stáiseanóireacht / Copies and Stationary:	€5
Árachas / Insurance	€6
APP	€4
Fótachóipeáil / Photocopying:	€5
Iomlán / Total:	€70

Costas Teaghlaigh / Cost for families	
Méid / Number of children:	Cost per child
Páiste amháin / One child	€70
Beirt Pháiste / Two Children	€120
Triúir Pháiste / Three Children	€170
Má tá níos mó ná triúir pháiste agat, labhair leis an oifig. Speak to the office if you have more than three children.	

Sampla /Sample

Costas Iomlán ar na leabhair / Total cost of rental books: **€ 230.00**

Íocainn sibhse / Rental cost to you: **€30.00**

Sábháil / Savings per child: **€200.00**



Covid – 19: Athraithe Chuig an Foirgnimh/ Changes to the Building

- Doirteal le dul i ngach rang
- Díghalrúcháin láimhe uathoibreach
- Bealaí aon slí ar na pasáistí
- Troimitheoirí láimhe
- Troscán breise bainte le níos mó spás a fháil sna ranganna
- Mascanna agus visors curtha ar fáil don foireann
- Glantóir fostaithe i rith an lae
- Sinks going into all classrooms
- Automatic hand gel dispensers
- One way system on the corridors
- Hand dryers
- Extra furniture removed to make more space in classrooms for social distancing
- Masks and visors provided for staff
- Cleaner employed during the school day





Meithligh agus Grúpaí



- Meithleach - grúpa de 4-6 páiste a suíonn le chéile sa rang agus gur féidir súgradh le chéile ar an gclós - déanta suas ag na múinteoirí
- 1m idir na meithleach sa rang, sa líne agus ar an gclós
- Téann na páistí go dtí an leithreas lena meithleach
- Níl cead ag na meithligh meascadh
- Grúpaí A, B & C - difriúl ó na meithligh – bunaithe ar sloinne, le haghaidh am dul abhaile amháin
- Pod – a group of 4-6 children that sit together in the class that can play together on the yard
- 1m between pods in the classroom, in lines and on the yard
- Children will go to the bathroom with their pod
- Pods are not permitted to mix
- Groups A, B & C – different to the pods – based on surname of the child, for home time only.

COVID-19



Covid 19 – na Siomtóim

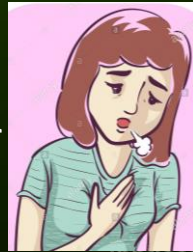


- Má tá aon do na siomtóim seo ar do pháiste - ná sheoil ar scoil iad:
 - Casacht nua
 - Teocht ard (38 céim nó níos mó)
 - Gearranáil
 - Easpa nó athrú ar blas nó boladh

- If your child has any of the following symptoms – do not send them to school:
 - A new cough
 - High temperature (38 degrees or higher)
 - Shortness of breath
 - Distortion or loss of taste or smell
 - Call the HSE and follow their instructions



- Cuir glaohch ar an HSE agus lean na treoracha a thugtar duit





Covid 19: Teoir ón HSE

- Ná sheol do pháiste ar scoil má:
 - Raibheadar i dlúth-teangmháil le duine le covid 19 le 14 lá anuas
 - Tá siad ina chónaí le duine atá tinn agus go bhfuil seans ann go bhfuil Covid 19 orthu
 - Breis eolas ar fáil ar suíomh an HSE
- Don't send your child to school if:
 - They were in close contact with some who has tested positive for Covid 19 in the past 14 days
 - They are living with someone who is unwell and may have Covid 19
 - More information available on the HSE website



Má tá cás Covid-19 sa Scoil (Treoreacha ón HSE)

- Má tá páiste ag taispeáint siomtóim Covid 19, tógfar iad go dtí an ionad scoiteacht le ball ón bhfoireann.
- Cuirfear glaoch ar an tuismitheoir len iad a thógáil abhaile.
- If a child is showing covid 19 symptoms, they will be taken to the isolation area with a member of staff
- Their parent will be called to take them home



Ar an gClós

- Beidh amanta agaithe clóis againn lena clós féin ag gach rang
- Ní bheidh cead ag na ranganna meascadh ar an gclós
- Fanfaidh na meithligh le chéile
- Múinteoir ó ceann do na dá rang ag déanamh maoirseoireacht ar an dá rang
- There will be staggered yard times with each class having their own yard
- Classes will not be permitted to mix on yard
- Pods will stay together
- A teacher from one of the two classes will supervise both classes.





Sláinteachas/Hygiene

- Iarrtar oraibh na héadaí scoile a mhalartú go rialta (éadaí scoile/spóirt) agus iad a nigh go minic
- Beidh mála leithreas ag teastáil ó na páistí le tuaille aghaidhe, gallúnach agus díghalrán láimhe istigh ann
- Beidh na dromchlaí sa rang á ghlanadh ag na múinteoirí go rialta agus na leithris á ghlanadh ag na glantóirí i rith an lae
- We ask that you rotate the school clothes worn daily (uniform/school tracksuit) and wash them regularly
- The children will need a bathroom bag with a facecloth, soap and hand sanitiser inside.
- Classroom surfaces will be regularly cleaned by teachers and the toilets cleaned by the cleaners on a regular basis.

Cód Iompar / Code of Behaviour

Céimeanna ar an gcód Iompar

- Foláireamh ó bhéal
- Cárta Bán 1
- Cárta Bán 2
- Cárta Buí
- Fionraí sa bhaile 1
- Fionraí sa bhaile 2
- Díbirt
- Ionsaí Fisiciúil nó neamhaird dáiríre ar riarthóirí sa bhaile díreach
- Is féidir leis an príomhoide céim(eanna) a scipeáil más gá.

Naíonáin Mhóra

- Aghaidh Sásta / Brónach – Happy/Sad faces



Deá-lompar / Positive Behaviour

- Ticéad glas – ar Class Dojo
- Ticéad buí - ar Class Dojo
- Dalta na Seachtaine (ar líne)
- Gaeilgeoir na Seachtaine (ar líne)
- Corn na Gaeilge
- Pás Obair bhaile (ar líne)
- Am Órga
- Duaiseanna ag deireadh gach téarma

- Green Ticket – on class dojo
- Yellow Ticket – on class dojo
- Student of the Week – online
- Irish speaker of the Week - online
- Corn na Gaeilge
- Homework Pass (online)
- Am Órga
- End of term awards



Obair Bhaile

- Beidh tús leis an obair bhaile ar an 28/09/2020)
- O/B scríofa Luan., Máirt, Céadaoin - scríobh ar an obair bhaile
- Síniú ar an obair bhaile
- O/B ó bhéal Luan, Máirt, Céadaoin, Déardaoin, liosta focail coitianta agus fuaimeanna litreacha / fonaic
- Níl aon obair bhaile ón 11/12/2020 (Nollaig) nó ar an chéad seachtain ar ais tar éis an Nollaig.
- Níl aon obair bhaile scríofa i mí Meitheamh.
- Níl aon obair bhaile scríofa ar an Déardaoin.
- Obair bhaile ar an App (níl aon dialann OB i mbliana)
- Homework begins on the 28/09/2020
- Written Homework: Monday-Wednesday, letter writing, maths
- Homework must be signed
- Oral Homework: Monday-Thursday, common words list to learn as well as letter/phonic sounds
- No homework from the 11/12/2020
- No homework on the 1st week back in January.
- No written homework for the month of June
- No written homework on Thursday.
- Homework available on the App (no HW diaries this year)

Naíonán: 20 nóim/mins

Obair Bhaile ar Class Dojo

- Fágfar na leabhair/cóipleabhair a bhaineann le obair bhaile sa bhaile
- Glac griangraif don obair críochnaithe agus cuir é i portfolio do pháiste ar Class Dojo
- Tá físeán ar suíomh na scoile le taispeáint conas é seo a dhéanamh
- Leabhair léamh le thabhairt ar ais ar an Aoine i gcóir glanadh
- Obair ó bhéal don Déardaoin
- Books/copies used for homework will be kept at home
- Take a photo of the finished work and put it in your child's portfolio on Class Dojo.
- There is a video on the school website explaining how to do this.
- Reading books to be returned to school every Friday
- Oral work will be given for Thursday's homework.



Lón / Lunch

Aon rud le cnónna

Deochanna Fizzy

Milseáin

Seacláid

Criospaí

Grán Rósta Manhattan

Aon bhia míshláintiúil



Anything containing Nuts

Fizzy Drinks

Sweets such as jellies etc

Chocolate

Crisps of any sort

Popcorn Manhattan

Any unhealthy lunches

- ❖ Lón Glanmore le fáil ón scoil go dtí deireadh na bliana./ Glanmore Lunch
- ❖ Bruscair ar fad le dul abhaile,
- ❖ All lunch materials/rubbish sent home, so you can see what your child ate at school

Cruinniú Múinteoirí/Tuistí: Mí na Samhna

Parent/Teacher Meetings: November



Cruinniú Múinteoirí SET/Tuistí: Mí Dheireadh Fómhair

Parent/SET Teacher Meetings: October



- Dhá sos leithris gach lá (10:00 agus 12:00)
- Úsáidéann na páistí na leithris thíos staighre (tógann múinteoir Adele na cailíní agus tógann múinteoir Breandán na buachaillí)
- Am súgradh sa chlós - dhá treimhse de 20 nóiméad.
- Two toilet breaks every day (10:00 and 12:00)
- The students use the downstairs toilets. (Múinteoir Adele takes all the girls to the girls' toilet and Múinteoir Breandán takes the boys to the boys toilet).
- It is possible to go at any time if a there is an emergency, the students can use the toilet next to Seomra na dTuistí
- Yard time – two periods of 20 minutes every day.

Ealaíon /
Art

NMA Breandán

*Aoine /
Friday*

NMB Adele

*Dé Luan
/ Monday*

Spórt /
Sport

*Máirt &
Déardaoin /
Tuesday &
Thursday*

*Máirt &
Déardaoin /
Tuesday &
Thursday*

- Peil le Jason ar an Déardaoin / Football with Jason on Thursday



Rudaí le tógáil isteach

- Mála plaisteach do chóta
- Mála leithris le gallúnach / sanitiser don leithreas
- Plastic bag for a coat
- Toilet bag with soap / sanitiser and a towel



Aon rud eile

- Más féidir déan iarracht gan bia a thabhairt dod' dalta nach bhfuil siad in ann oscailt
- Lón Glanmore – éinne nach bhfuil cláraithe dó cuir glaoch ar Mary san oifig
- Má tá aon ceist is féidir libh dul i dteagmháil le Mary nó linn ar Class Dojo
- If possible, try not to send food in unless they can open it themselves
- Glanmore Lunches – anyone who hasn't registered ring Mary in the office
- If you need to make contact with your child's múinteoir, you can ring the office or message us on Class Dojo.